

KOHO

觀塘鴻圖道75號
75 Hung To Road, Kwun Tong

蛻變革新，成功典範

A successful transformation setting the
exemplary model

物業簡介 PROPERTY INTRODUCTION

寫字樓座數 1 座
Office Towers 1 Tower

樓層數 12 層
No. of Storey 12 nos.

總面積 約218,968 平方呎
Total Area Approx. 218,986 sq. ft.

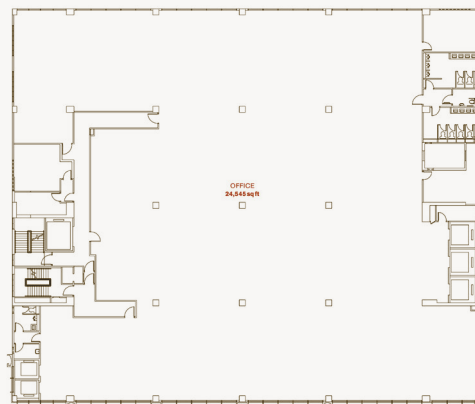
面積 約16,151平方呎 (4-12/F) 至24,545平方呎 (1-3/F)
Area Range 16,151 s.f (4-12/F). to 24,545 s.f (1-3/F)

升降機 3部客用升降機 (全層)
Lift 2部客用專用升降機 (地下至3樓)
1 部貨運升降機
3 passenger lifts serving all floors
2 exclusive passenger lifts serving G/F to 3/F
1 cargo lift

停車位 28 個
Carpark Space 28 nos.

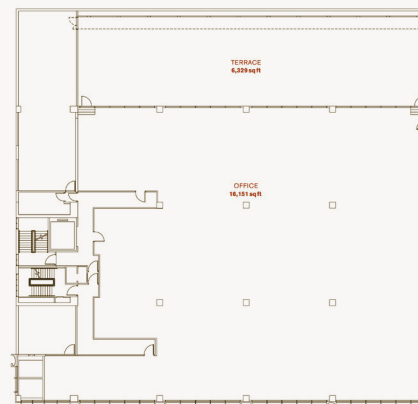
樓面荷載 3 千帕動荷重+1 千帕間隔荷重
Floor loading 3 kPa live loading + 1 kPa for partitions

1—3/F



Not To Scale, For Reference Only

4/F



鴻圖道
Hung To Road

大廈特點 FACTS & FIGURES

憑著匠心獨運的設計和心思，把原本工業大廈完美轉型為簇新的甲級辦公大樓，不但為觀塘區重新注入活力朝氣，更是九龍東活化的成功範例。

Built with ingenious design and exquisite craftsmanship, KOHO is a successful transformation from an industrial building into a modern Grade-A office tower. It brings not only new vigour to Kwun Tong, but also an exemplary revitalisation model in the Kowloon East.

樓面面積，設計寬闊

Spacious design for the floor plan

大廈4至6層每層樓高4.2米，空間感特高。結合每層寬闊的辦公室樓面，提供自在輕鬆的工作環境和靈活的辦公空間。

The spacious office design is accentuated by the 4.2 metre high ceiling for 4 - 6/F. KOHO boasts an expansive layout for every floor, providing a cosy work environment for tenants with the flexibility to accommodate various functions.

獨立配套，進出方便

Exclusive facilities for tenants' convenience

大廈設有獨立的電梯大堂，除了3部通往所有樓層的升降機，另設2部租客專用的升降機，來往地下至3樓，大大省卻等候的時間。

Exclusive facilities include a lift lobby. In addition to 3 other passenger lifts serving all floors, there are 2 exclusive passenger lifts serving G/F to 3/F, which effectively reduce tenants' time of waiting.

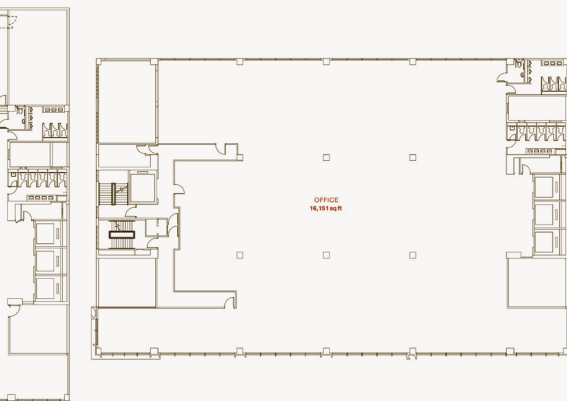
交通便捷，四通八達

Easily accessible with a well-connected transport network

步行前往觀塘地鐵站只需7分鐘，鄰近觀塘渡輪站和觀塘渡輪巴士總站。地理優越，前往各區轉瞬可達。

KOHO is well-connected to the transport network. It only takes a 7-minute walk to Kwun Tong MTR station, adjacent to Kwun Tong Ferry Pier and Kwun Tong Ferry Bus Terminus. It is easily accessible with its convenient location.

5—12/F



KOHO



新世界發展有限公司
New World Development Company Limited

Disclaimer: This brochure/promotional material has been prepared for general information purposes only, and is not, and shall not be deemed to constitute, an offer or contract or is it intended to create any relationship (whether contractual or otherwise) whatever nor be regarded as providing any advice or recommendation. No warranty or representation is given (whether express or implied), as to its completeness, accuracy or correctness. Information provided in this document is for guideline and reference only, in particular, visuals including art renderings, photographs, models and illustrations, portray artist's impressions only and are not to be taken as representation of fact. All information contained herein is subject to change from time to time without prior notice. Prospective tenants should carry out their own analysis, investigations and interpretations regarding the information provided in this brochure/promotional material or in connection thereto. No person in the employment of the agent or the agent's principal has any authority to make any representations or warranties whatsoever in relation these particular.

If you would like to opt out from receiving circular mail, please place a "No Circular Mail" sticker on the letter box. The stickers are freely available at all post offices, Home Affairs Enquiry Centres of District Offices as well as estate management offices of public housing estates and selected private residential developments. However, circular mail posted by the Government and related organisations, Legislative Councillors/District Councillors, election candidates, and charitable bodies eligible for tax relief under section 88 of the Inland Revenue Ordinance are exempted from this opt-out scheme.